

The "SUPER HI-Q" 5 Valve PORTABLE RECEIVER Incorporating THE "HI-Q" Basic Kit SIZE 8 1/2 in. x 4 in. x 5 in.

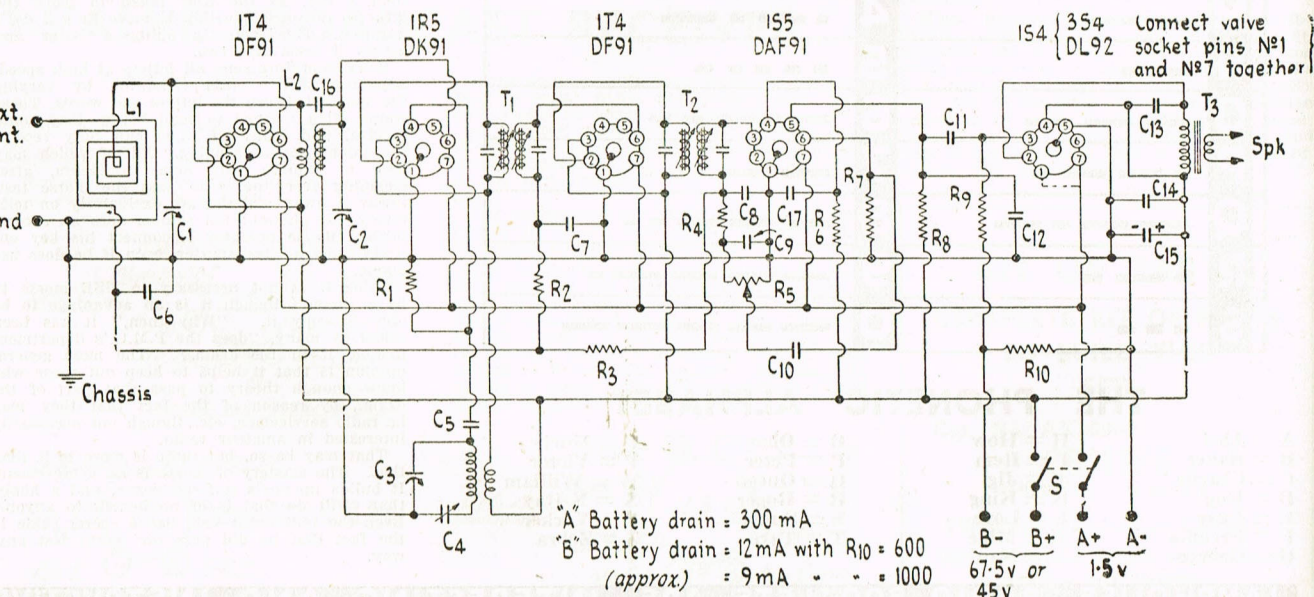
PORTABLE PERFORMANCE PLUS! AND THE REASON WHY!

On test, during daylight hours, this portable received with good volume all the main New Zealand stations; at night dozens of New Zealand and overseas stations were received. This is really PORTABLE PERFORMANCE PLUS!

IDEAL FOR PICNICS BOATING BACHES SEASIDE ETC.

and for many other uses, such as bedside radio, obtaining sporting and racing results held at other sports fields, etc.

- DIAMOND WEAVE LOOP, giving much greater signal pick-up than any other type of loop of similar size. CYLINDER IRON DUST CORED, Litz wound R.F. Coil which gives (in conjunction with Diamond Loop) high R.F. gain and Signal to noise ratio. HIGH GAIN, PERMEABILITY TUNED, PIE WOUND LITZ I.F. TRANSFORMERS (equal to most full-size transformers), size 23/32 in. sq. x 2 in. DUST PROOF TUNING CONDENSER. A "MATCHED" KIT.



"A" Battery drain = 300 mA "B" Battery drain = 12 mA with R10 = 600 (approx.) = 9 mA - - = 1000

DETAILED PARTS LIST

"HI-Q" BASIC KIT.

- Qty. 1. Chassis. 1. Midget protected gang (mounts tapped and complete with screws and washers). (C1, C2, and C3). 1. Midget I.F. Transformer, interstage, 455 k/c. (T1). 1. Midget I.F. Transformer, Diode, 455 k/c. (T2). 1. Diamond weave loop (L1). 1. Cylinder iron dust, R.F. coil (L2). 1. Oscillator coil (L3 tuned by C3). 1. Dial scale. 1. 600 mmfd. padder (C4). 2. 6.32 x 1/4 in. screws (coil mounting). 2. 6-32 x 3/4 in. screws } Loop mounting hardware. 4. 6-32 nuts. 4. 5/32 x 5/16 in. washers } 2. Loop spacers, 1/2 in.

- C8, C9 = 100 pfd. C10 = 0.0025 mfd. C11 = 500 pfd. C12 = 500 pfd. (inclusion optional). C13 = 0.002 mfd. C14, C17 = 0.1 mfd. paper. C15 = 8 mfd. electrolytic. C16 = 10 pfd. ceramic (supplied with type 35B coil). Resistors. R1, R2 = 100K. R3, R9 = 2m. R4 = 50K. R5 = .5m. Potentiometer with D.P.S.T. switch fitted (switch "S"). R6 = 3m. R7 = 10m. R8 = 1m. R10 = 500 ohms. to 1,000 ohms. (see diagram). Miscellaneous. Qty. 5. Miniature valve sockets. 5. Valves as per diagram. 2. Pointer knobs.

OTHER PARTS.

- Condensers. C5 = 50 pfd. C6, C7 = 0.05 mfd. paper.

- 12. 6.32 nuts. 12. 6.32 x 1/4 in. screws. 10. 3.48 x 1/4 in. screws. or other suitable size for mounting valve sockets. 10. 3.48 nuts. 1. Terminal strip, "Carr" type 7 lug including two mounting lugs. 1. Terminal strip, "Carr" type 3 lug including one mounting lug. 1. Output transformer, (T3) Impedance according to output tube and voltage used (see valve characteristics), (1S4 at 45.V. = 8,000 ohms., and at 67 1/2.V. = 5,000 ohms.). 1. Speaker, 3in. permanent magnet. 1. Switch, D.P.S.T. (S), mounted on volume control R5.

" LAMPHOUSE " KIT OF PARTS

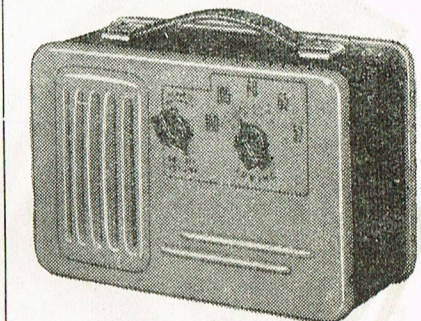
Containing all the components listed above plus any small extras necessary to give you a complete Kit. Also the "HI-Q" BASIC KIT (as listed).

KITSET WITH SPEAKER, WITHOUT BATTERIES OR CABINET, Cat. No. AK2076 £11/5/-

WITH 67 1/2-VOLT BATTERY WITHOUT CABINET, Cat. No. AK2076A £12/8/6

WITH ATTRACTIVE PLASTIC CABINET ILLUSTRATED, Cat. No. AK2076B £16/7/6

PORTABLE CABINET



This Cabinet is specially designed for the "HI-Q" Portable and is supplied complete with all fittings. It is finished in moulded plastic and leatherette and is fitted with a carrying handle. A scale is silk screened on the cabinet front and the V/C design covers both tuning knob and V/C (see illustration). Size 8 1/2 in. x 4 in. x 5 in. Cat. No. AC157 £3/19/3

CONSTRUCTIONAL NOTES:

CODING: All coding is standard. The I.F. Trans. connections are shown on the moulded base.

ALIGNMENT: To align, fit the dial scale temporarily, and align in the usual manner. On completion, seal all trimmers and also the adjusting screws of the I.F. Transformers.

LAYOUT: The illustration shows clearly the layout of all components. The type 51BY oscillator and 600 mmfd. padder are mounted under the chassis in the front right-hand corner in the holes provided.

LOOP: This should be mounted by means of the hardware provided with the "BASIC KIT" giving a separation from the chassis of 19/32 in. (for correct matching and tracking).

"FREE LOOP": By arranging the loop in such a manner that it may be swung free of the chassis when in operation (90deg. movement) greater pick-up is obtained. For correct matching under these conditions, remove 2 2/13 turns from the loop starting from No. 4 lug. Align with loop in operating position.

THE PORTABLE AS AN AUTO-RECEIVER: Good results may be obtained from a 100in. whip aerial by removing the loop primary winding and connecting the aerial to a tap about 1/3rd up from the earthy end of the loop secondary (the exact position being found experimentally). The shielded cable connecting the aerial and tap should be of low capacity and minimum length. The total aerial capacity should not exceed that at which the aerial trimmer fails to peak.

OUTPUT TUBES: The diagram incorporates a 1S4 output tube. When using types 3S4 or DL92 the pins No. 1 and No. 7 should be bridged as shown by the dotted lines in the circuit.

CABINET: The illustration shows a phantom cabinet of the same dimensions as Cat. No. AC157. Size of cabinet 8 1/2 x 4 ins. x 5 ins. approx. Batteries used—"A" = torch cells; "B" = Minimax No. 467 (67 1/2 volts).

C12: The condenser C12 is rarely necessary and should only be employed if slight instability is experienced when receiver is operating on 67 1/2 volts or greater.

VALVE SOCKETS: The centre shield of the valve sockets should be earthed as shown in the diagram.